



## **CONSTRUCTION UPDATE NOTICE**

**Weeks of: June 26, 2017 thru the week of July 3, 2017**

### **What to Expect On-Site the Next Two Weeks:**

The site and buildings General Contractor, L.F. Jennings, will continue site construction in multiple areas. Washington Gas Light (WGL), Verizon, Comcast, WSSC and Pepco are completing the installation of utility services to each new building. The base paving for the new road construction throughout the site is substantially complete. Construction of the new commercial Buildings #1 & 2 are nearly complete & the tenant fit-out work in these buildings is scheduled to start in July. Construction of the new commercial Building #4 is well underway & scheduled for completion by the end of the year. The remaining tenant fit-out work in Building #3 is on-going.

### **Townhomes:**

The construction of the 119 townhomes is well underway. The first section of townhomes contains the model units and has one unit that is currently for sale. The second section of townhomes contains 11 units and they have all been sold and will all be occupied by the end of June. The third section of townhomes has 13 units and is nearing completion. Last week, ground was broke for the fourth section of townhomes. Currently, 29 townhomes have been sold.

### **Gateway Park:**

Artwork installation south of Van Buren Street will commence this summer pending the final sign-off by the County of that section of Gateway Park.

### **CSX Crossing:**

The closure of the former ERCO plant parking lot between the Rivertech Court cul-de-sac and Lafayette Avenue will continue until the new bridge is open – estimated to be in the Fourth quarter of 2017.

The bridge builder, Shirley Contracting, has begun to build the concrete deck on top of the girders. It is anticipated the concrete decking will be completed late this summer. Construction is continuing on the retaining wall system on the east & west abutment. Earthwork & drainage operations continue adjacent to the former ERCO plant. This work includes excavation and storm drainage installation and will continue through the Third quarter of 2017. The construction will be monitored to assure compliance with County work hours and noise regulations.

### **Whole Foods Market:**

Whole Foods Market opened on April 12, 2017.

### **Hiker/Biker Trail:**

The Hiker/Biker Trail has been deeded to MNCPPC's Department of Parks and Recreation who will manage and maintain the trail. They expect to open the trail for use by the public once they determine that site conditions are suitably safe from dangers associated with the immediately adjacent construction activities. Those construction activities include the townhouse construction along the newly constructed extensions of Woodberry Street and Rhode Island Avenue and a new grade separated crossing of the CSX tracks (which will

include designated bike lanes). Additionally a new multi-family residential building is slated to start construction this year immediately adjacent to the hiker-biker trail between Woodberry Avenue and Van Buren Street which is expected to take between 18-24 months to complete.

It is our hope with the completion of the townhouses and the commercial buildings on the western half of the boundary later this summer, we will be able to create a temporary hiker-biker route through Riverdale Park Station which circumvents the other ongoing construction work initially connecting the hike-biker trail north of Riverdale Park Station in the City of College Park to the Whole Foods Store and subsequently to the recently paved section south of Riverdale Park Station.

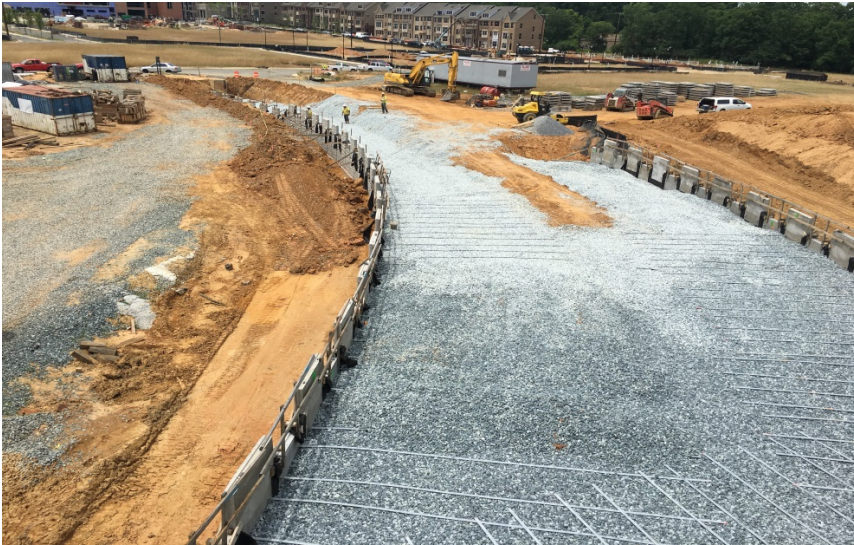
**Work Hours:**

Work activity will be taking place Monday – Sunday between the hours of 7 a.m. and 7 p.m.

**Contact Information:**

For any **construction related concerns**, please contact Mark Regulinski of Calvin Cafritz Enterprises at 202/248-5806 or email at [mark@cafritzenterprises.com](mailto:mark@cafritzenterprises.com).

For **Stanley Martin townhome** information, please contact Brea DePina at 703/939-7039 or email at [DePinaBJ@StanleyMartin.com](mailto:DePinaBJ@StanleyMartin.com).



**Picture:** Bridge Deck – Looking West: June 2017



**Picture:** Bridge MSE Wall along CSX Tracks – Looking South: June 2017